

## Progress Report on PAPUSSA Year 2004



**PAPUSSA**  
Participatory Aquaculture and  
Fisheries Support System

## Outcomes from P&P Meeting in Hanoi 2003

Communities	Aquatic food production systems	No. of households survey	No. of NA* households survey	Total no. of households
Nongpraongai	Intensive morning glory farming in rice-fields	56	54	110
Suanprixthai	Water mimosa growing in canal	20		52
	Fish polyculture	27	5	
Lumsai	Intensive monoculture of hybrid walking catfish in ponds	32	18	50



\*NA = Non-Aquatic Production

## Summary of Work Plan and Activity for Year 2004

Activities	Month											
	Jan	Feb	Mar	Apr	May	June	July	Aug	Sep	Oct	Nov	Dec
Visit farmers in 3 communities												
Workshop in AIT on BL&Mon. Surveys and pre-test ques.												
Baseline and 1 <sup>st</sup> Monitoring Surveys at Nongpraongai												
Baseline and 1 <sup>st</sup> Monitoring Surveys at Suanprixthai												
Baseline and 1 <sup>st</sup> Monitoring Surveys at Lumsai												



## Summary of Work Plan and Activity for Year 2004 (con't)

Activities	Month											
	Jan	Feb	Mar	Apr	May	June	July	Aug	Sep	Oct	Nov	Dec
KU Meeting with the coordinator and Field trip to morning glory farm at Nongpraongai, 2 <sup>nd</sup> Monitoring Survey at Nongpraongai												
2 <sup>nd</sup> Monitoring Survey at Suanprixthai												
2 <sup>nd</sup> Monitoring Survey at Lumsai												
Individual Mapping at Nongpraongai Suanprixthai and Lumsai												



## Summary of Work Plan and Activity for Year 2004 (con't)

Activities	Month											
	Jan	Feb	Mar	Apr	May	June	July	Aug	Sep	Oct	Nov	Dec
Water quality Monitoring at Lumsai Nongpraongai, Suanprixthai												
Workshop on data entry and analysis at AIT and KU												
Plan for finalizing the AFF's presentation and Progressive report on baseline data at KU												

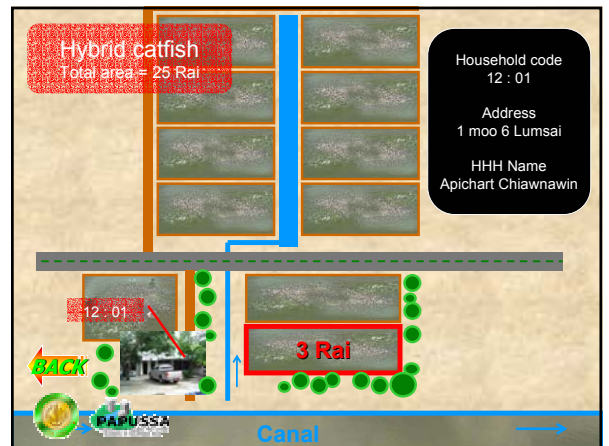
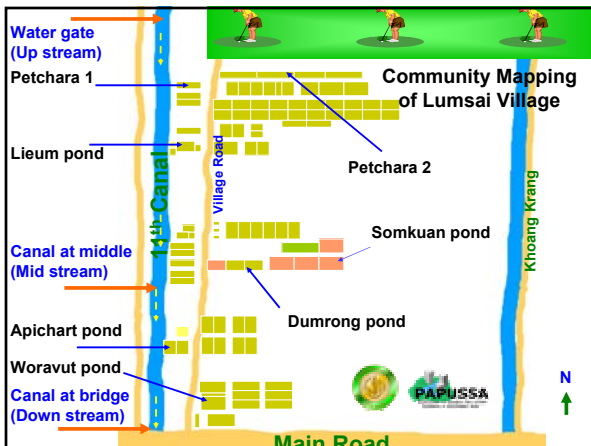
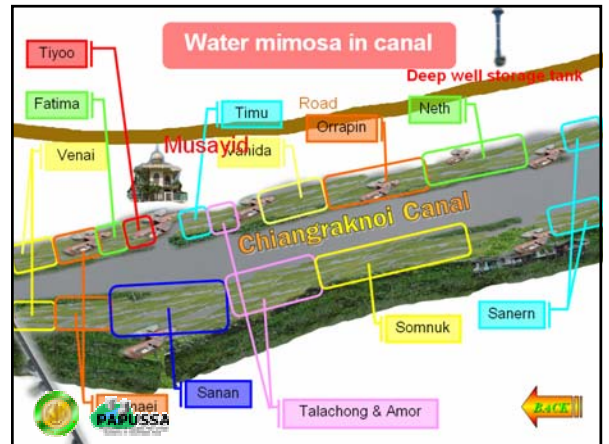
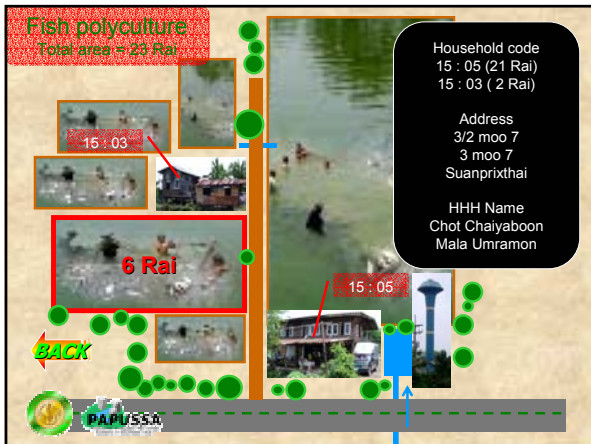
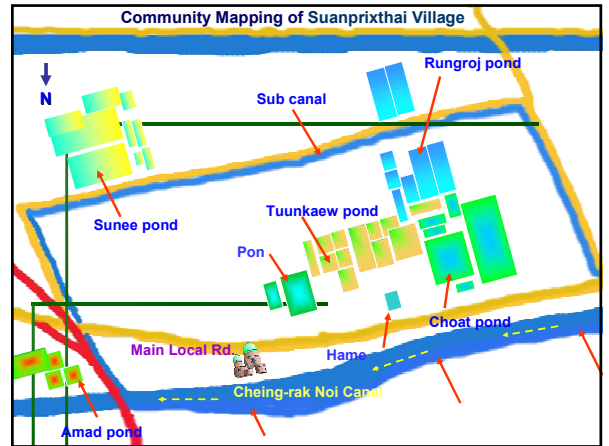


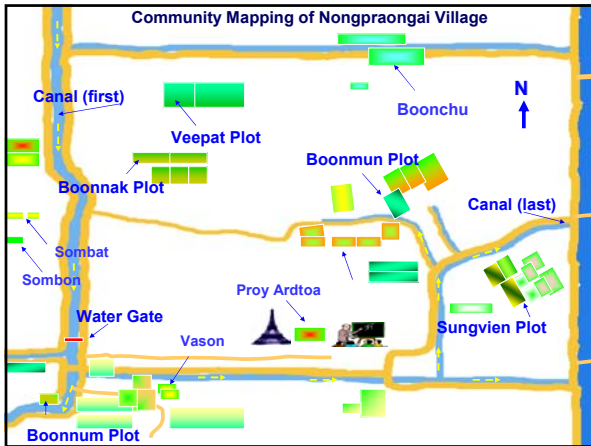
## Work Plan for BL&Mon. Survey



# Individual Mapping

- Nongpraongai Village
- Suanprixthai Village
- Lumsai Village





### Problems Encountered with Staffs on Baseline Survey

**Farmers**

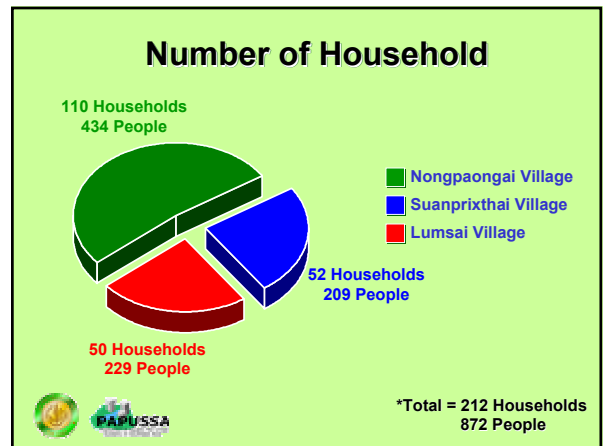
- Some farmers didn't participate because of being afraid of tax payment problem
- Some data were approximated due to unavailability (e.g., production and income)
- Need something in exchange for providing us an information (e.g., fertilizer, chemical and drug)
- Some local guides had some personal problems with farmers causing unfriendly participation.

### Problems Encountered with Staffs on Baseline Survey (con't)

**Area**

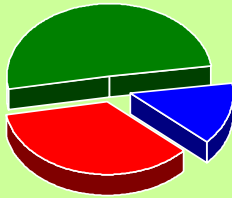
A Risk from a dog bite

### Baseline Survey Details



## Day (Number) of Baseline

51% (40 Days/24 April – 30 June)



■ Nongpaongai Village  
■ Suanprixthai Village  
■ Lumsai Village

14% (11 Days/18 May – 23 June)

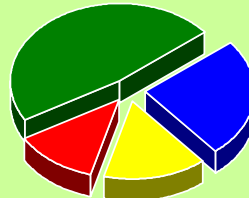
35% (12 Days/31 May – 11 June)



\*Total = 79 Days

## Relation of Interviewee with Household Head

48% (118)



■ Household head  
■ Spouse of Household Head  
■ Household Head's son or daughter  
■ Others

12% (31)

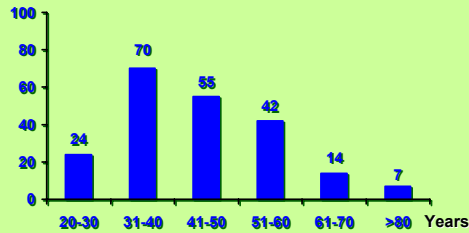
15% (38)



\*Total = 249 Interviewees

## Age Distribution of Interviewee

No. of Interviewee



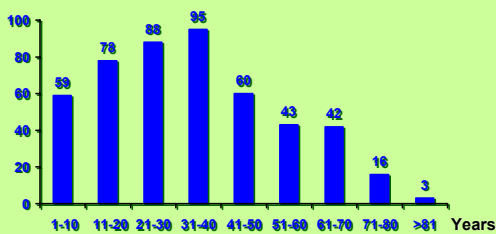
\*Total = 249 Interviewee

## Household Details



## Age Distribution at Nongpaongai Village

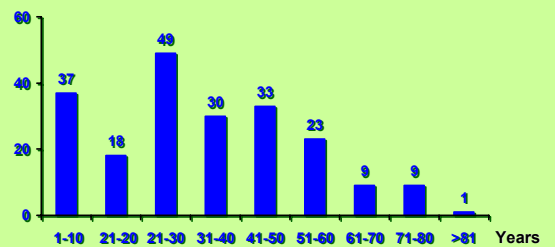
No. of Household Member



\*Total = 484 people

## Age Distribution at Suanprixthai Village

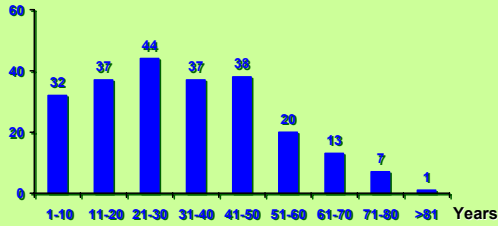
No. of Household Member



\*Total = 209 people

## Age Distribution at Lumsai Village

No. of Household Member

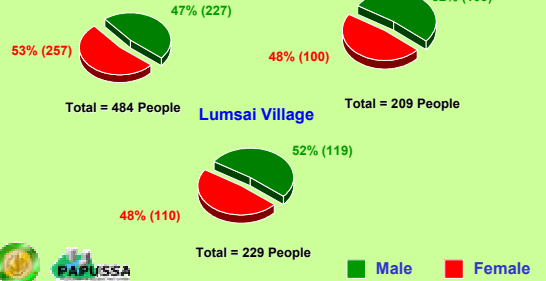


\*Total = 229 people

## Gender

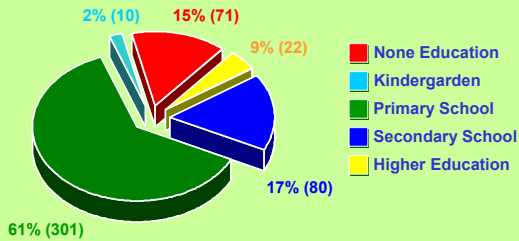
Nongpaongai Village

Suanprixthai Village



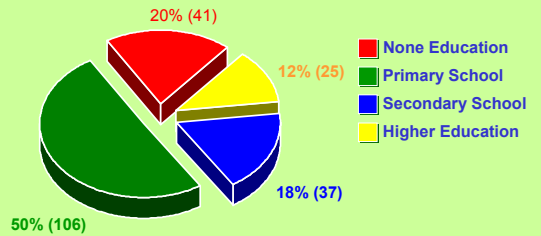
■ Male ■ Female

## Education Distribution at Nongpraongai Village



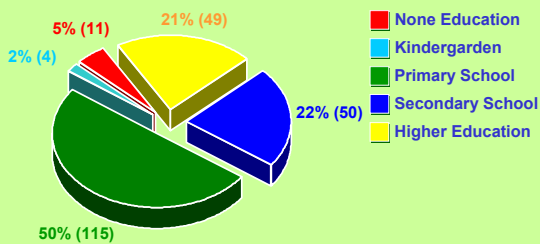
\*Total = 484 People

## Education Distribution at Suanprixthai Village



\*Total = 209 People

## Education Distribution at Lumsai Village

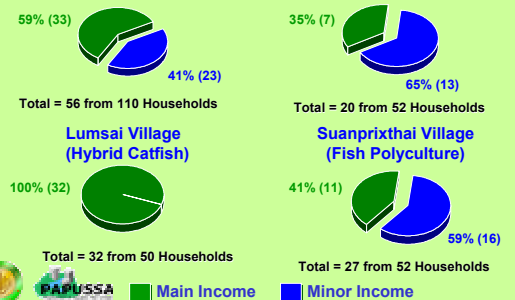


\*Total = 229 People

## Income of Aquatic Production

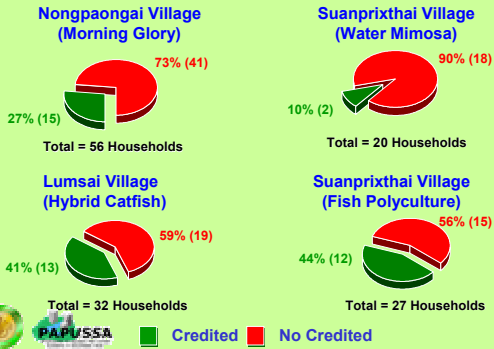
Nongpaongai Village (Morning Glory)

Suanprixthai Village (Water Mimosa)

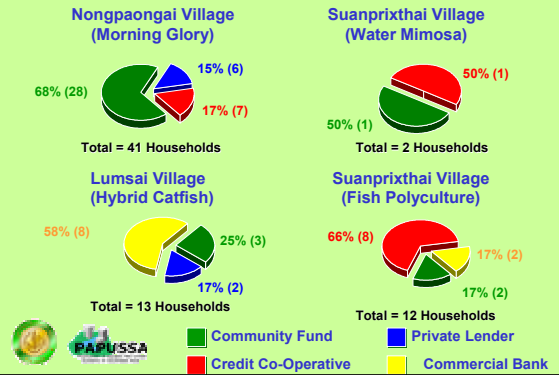


■ Main Income ■ Minor Income

## Credit for Aquatic Production



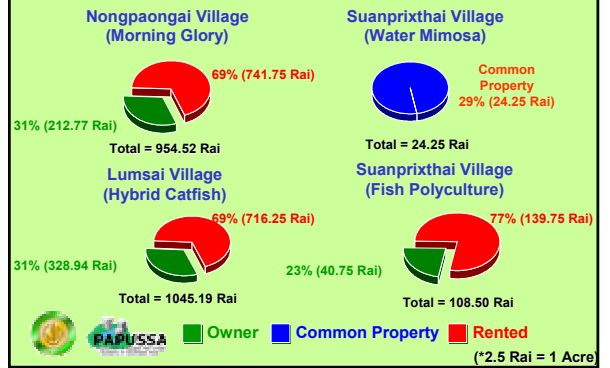
## Credit Source



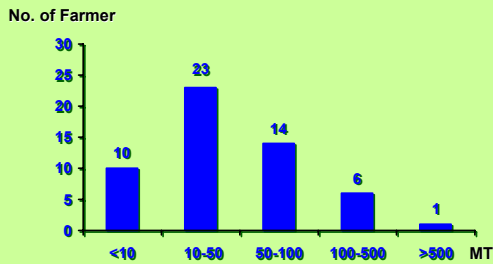
## Production Details



## Production Area

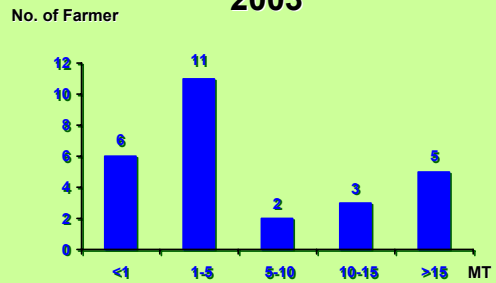


## Morning Glory Production 2003



\*Total = 3,813 MT  
\*Only Nongpaongai Production

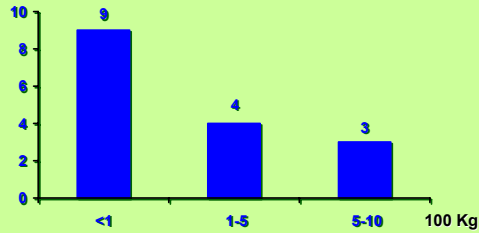
## Fish Polyculture Production 2003



\*Total = 281 MT  
\*Only Suanprixthai Production

## Water Mimosa Production 2003

No. of Farmer

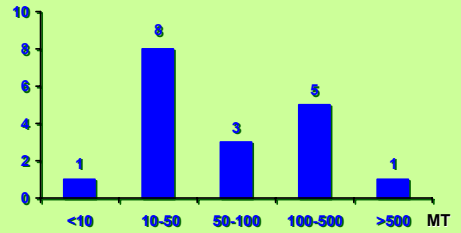


\*Total = 4 MT  
\*Only Suanprixthai Production



## Hybrid catfish Production 2003

No. of Farmer

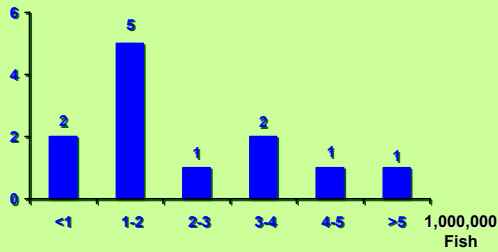


\*Total = 2,388 MT  
\*Only Lumsai Production



## Hybrid catfish Seed Production 2003

No. of Farmer

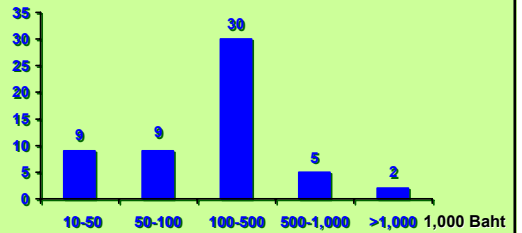


\*Total = 28,600,000 Fish  
\*Only Lumsai Production



## Income of Morning Glory Production 2003

No. of Farmer

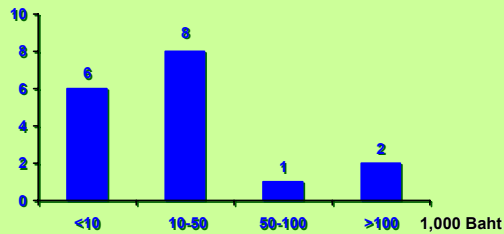


\*Total = 14,032,390 Baht (\$350,810)  
\*Only Nongpraongai Production



## Income of Water Mimosa Production 2003

No. of Farmer

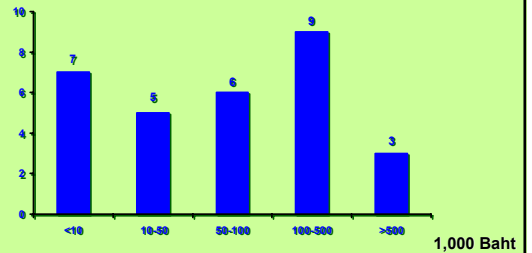


\*Total = 817,700 Baht (\$20,442)  
\*Only Suanprixthai Production



## Income of Fish Polyculture Production at 2003

No. of Farmer

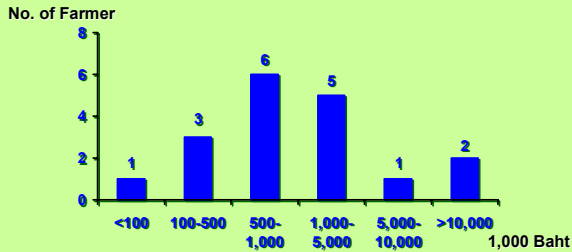


\*Total = 5,874,900 Baht (\$146,872)  
\*Only Suanprixthai Production



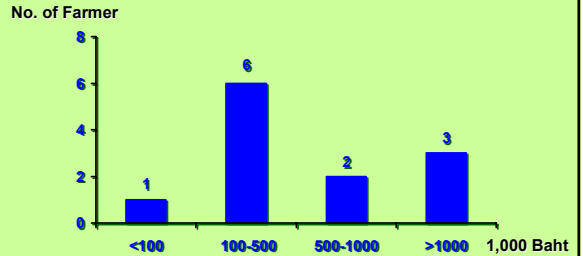


## Income of Hybrid Catfish Production 2003



\*Total = 70,182,000 Baht (\$1,754,550)  
\*Only Lumsai Production

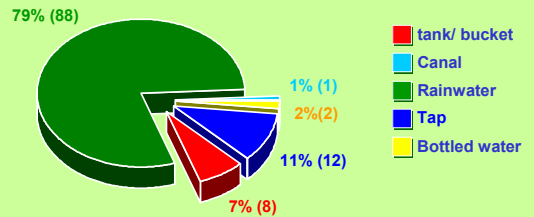
## Income of Hybrid Catfish Seed Production 2003



\*Total = 7,451,700 Baht (\$186,292)  
\*Only Lumsai Production

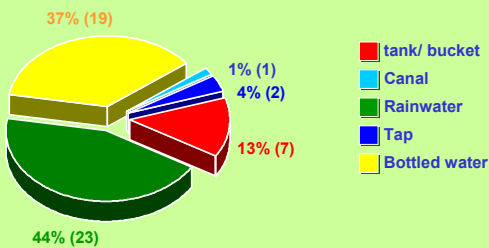
## Consumption

### Water Source in Nongpaongai Village



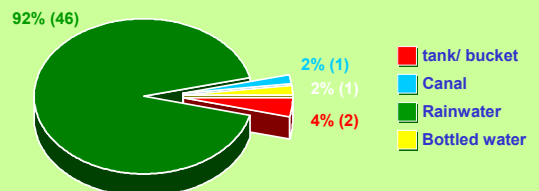
\*Total = 110 Households  
\*Only Drinking water

### Water Source in Suanprixthai Village



\*Total = 52 Households  
\*Only Drinking water

### Water Source in Lumsai Village



\*Total = 50 Households  
\*Only Drinking water



# Health Problems



# Health Problems

## Nongpaongai Village (Morning glory)

1. Back problems
2. Skin problems
3. Fever

## Suanprixthai Village (Water mimosa)

1. Fever
2. Skin problems
3. Diabetes

## Lumsai Village (Hybrid catfish)

1. Back problem
2. Respiratory / lung

## Suanprixthai Village (Polyculture)

1. Back problems

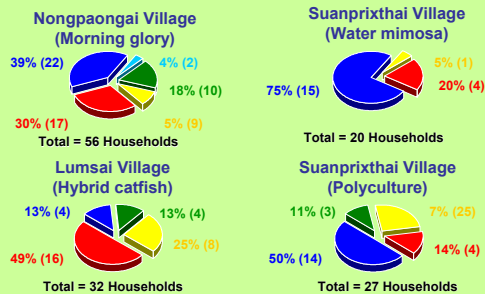


\*Only the illness reported by interviewee

# Future



# Expected Future Production Trend



Increasing area (Green), No change (Blue), Decreasing area (Red), Reducing crop density (Cyan), No opinion (Yellow)

# Problems Encountered

## Nongpaongai Village (Morning glory)

1. Disease
2. Decreasing production area
3. Pests (Golden snail and insect)

## Suanprixthai Village (Water mimosa)

1. Disease
2. Animal and plant pests
3. Floods

## Lumsai Village (Hybrid catfish)

1. Increased feed costs
2. Disease

## Suanprixthai Village (Polyfishculture)

1. Floods
2. Increased feed costs
3. Disease



# Suggested Solution

## Nongpaongai Village (Morning glory)

1. Pesticide application
2. Seeking for government support

## Suanprixthai Village (Water mimosa)

1. Replantation

## Lumsai Village (Hybrid catfish)

1. Drug treatment
2. Relocation
3. Seeking for government support

## Suanprixthai Village (Polyfishculture)

1. Drug treatment
2. Seeking for government support
3. Production system substitution



**THANK YOU**

